



Delivering Excellence Every Day



**MIAMI-DADE
CORRECTIONS & REHABILITATION DEPARTMENT**

**INMATE GRIEVANCE REPORT
FY 2011-2012
FOURTH QUARTER (Q4)**

**TIMOTHY P. RYAN
DIRECTOR**

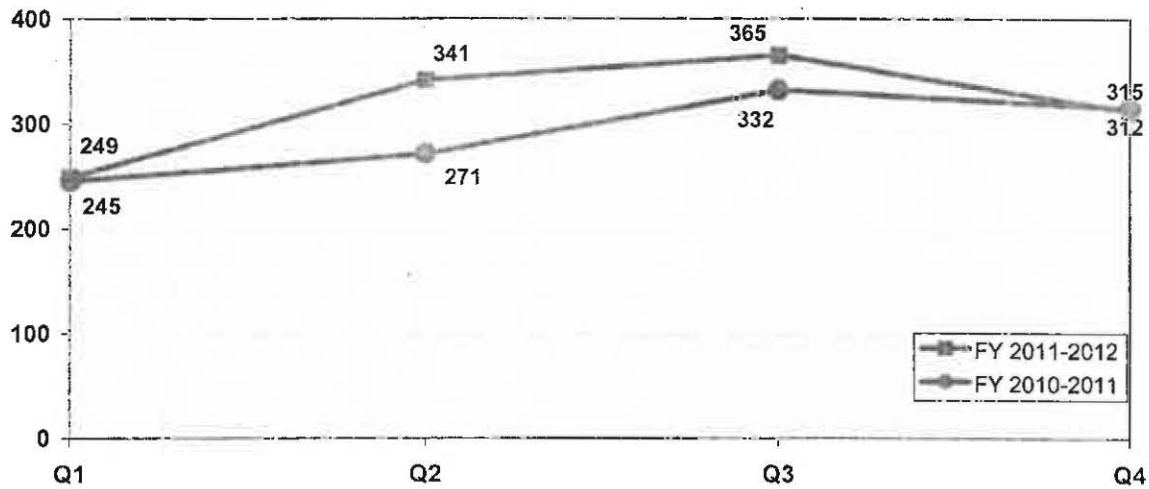


**INMATE GRIEVANCE REPORT BRIEFING
FY 2011-2012 Q1-Q4**

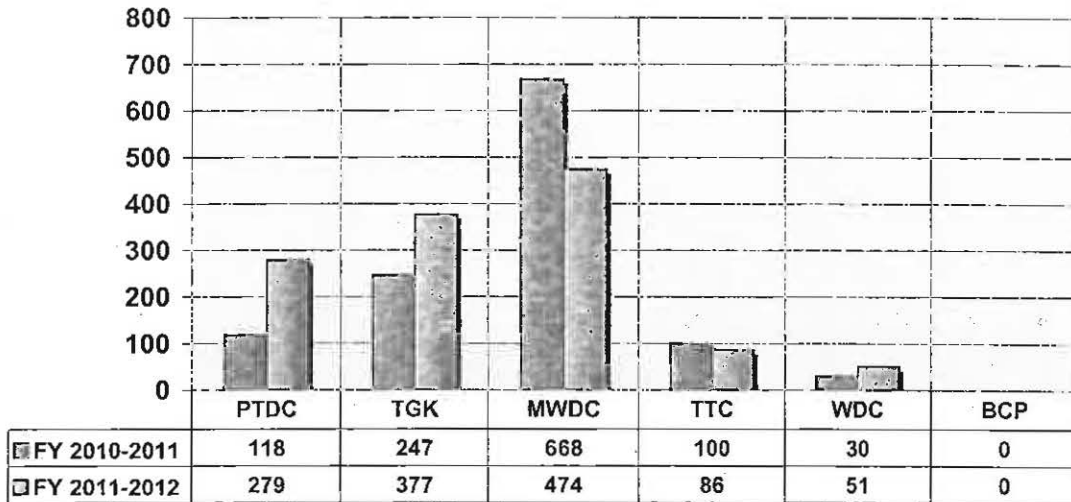
For FY 2011-2012 Q1-Q4, there were 1,267 inmate grievances reported (an average of 3.5 per day and 106 per month). Inmate grievances for FY 2011-2012 increased by 9% (104) compared to FY 2010-2011 (1,163).

In FY 2011-2012 Q1-Q4, June had the most grievances reported with 157 (48% over the monthly average, 106), while November had the least with 63 (-41% under the monthly average).

DEPARTMENT-WIDE INMATE GRIEVANCES



**DEPARTMENT-WIDE INMATE GRIEVANCES
PER FACILITY Q1-Q4 COMPARISON**





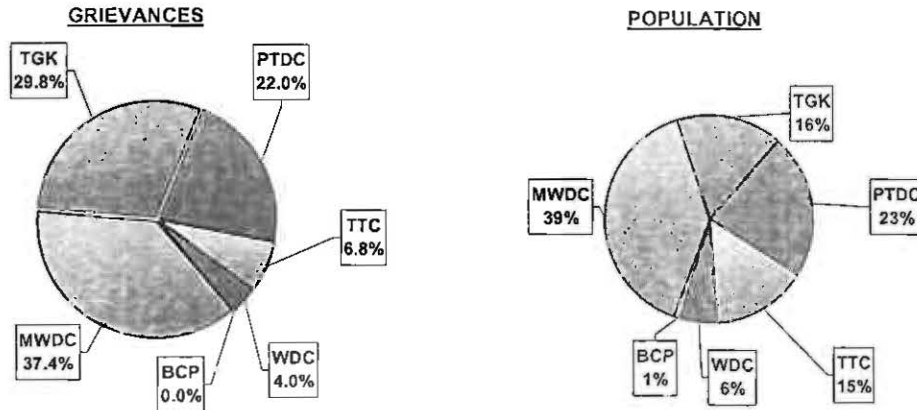
**MIAMI-DADE
CORRECTIONS AND REHABILITATION DEPARTMENT**



Percent of total grievances Q1-Q4 (1,267) by facilities are as follows:

- | | |
|---------------------|------------------|
| 1) MWDC 37.4% (474) | 4) TTC 6.8% (86) |
| 2) TGK 29.8% (377) | 5) WDC 4.0% (51) |
| 3) PTDC 22.0% (279) | 6) BCP 0.0% (0) |

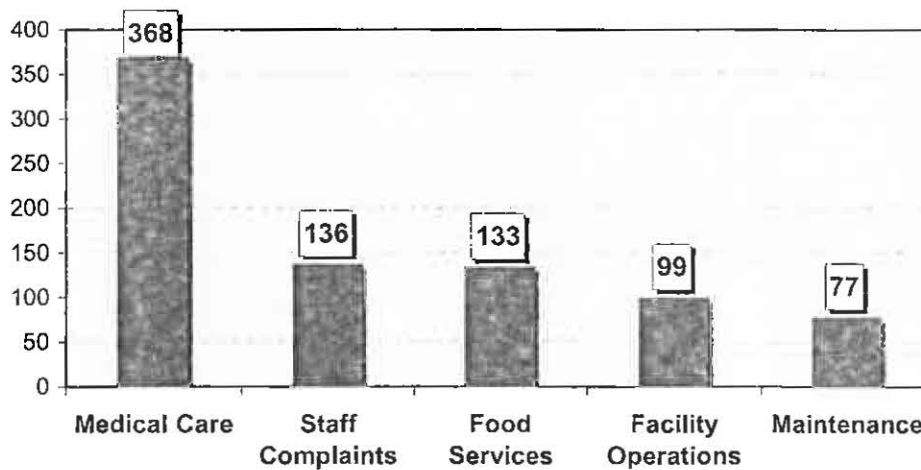
**DEPARTMENT-WIDE INMATE GRIEVANCES
FY 2011-2012 (Q1-Q4) PER FACILITY**



The top 5 category types account for 813 (64%) of the 1267 grievances. The top 5 category types of grievances reported in (Q1-Q4) are as follows:

- | | |
|-------------------------------|--------------------------------|
| 1) Medical Care 29% (368) | 4) Facility Operations 8% (99) |
| 2) Staff Complaints 11% (136) | 5) Maintenance 6% (77) |
| 3) Food Services 11% (133) | |

**DEPARTMENT-WIDE INMATE GRIEVANCES
FY 2011-2012 (Q1-Q4) TOP FIVE TYPES**

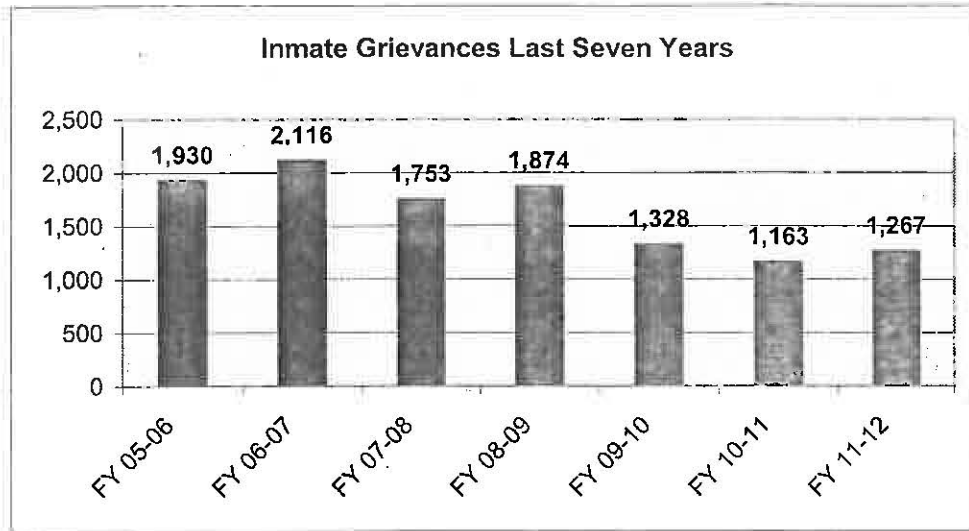


Source: Primary Indicator Report Network (03/18/13)

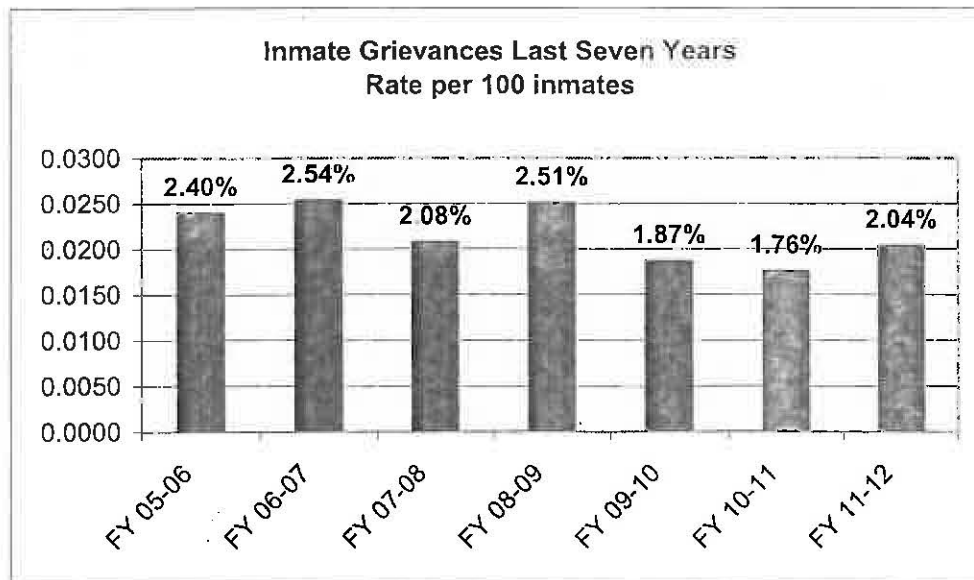


INMATE GRIEVANCE REPORT BRIEFING
FY 2011-2012 Q1-Q4

There has been a 34% decrease in the number of inmate grievances during the last seven years.

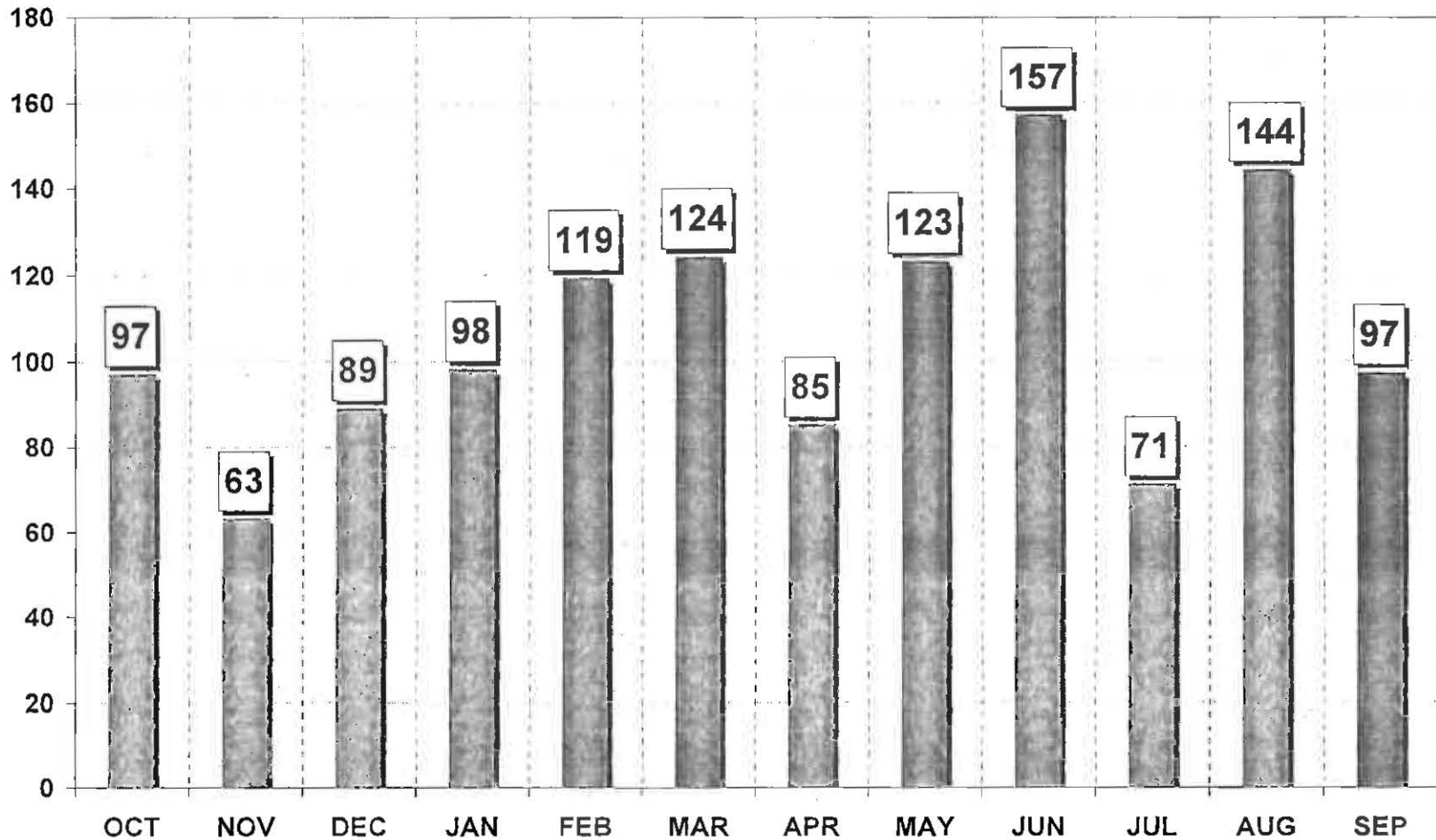


Over the past seven years, the average grievance rate was 2 grievances per 100 inmates.





Miami-Dade Corrections and Rehabilitation Department DEPARTMENT-WIDE INMATE GRIEVANCES FY 2011-2012 Q1-Q4

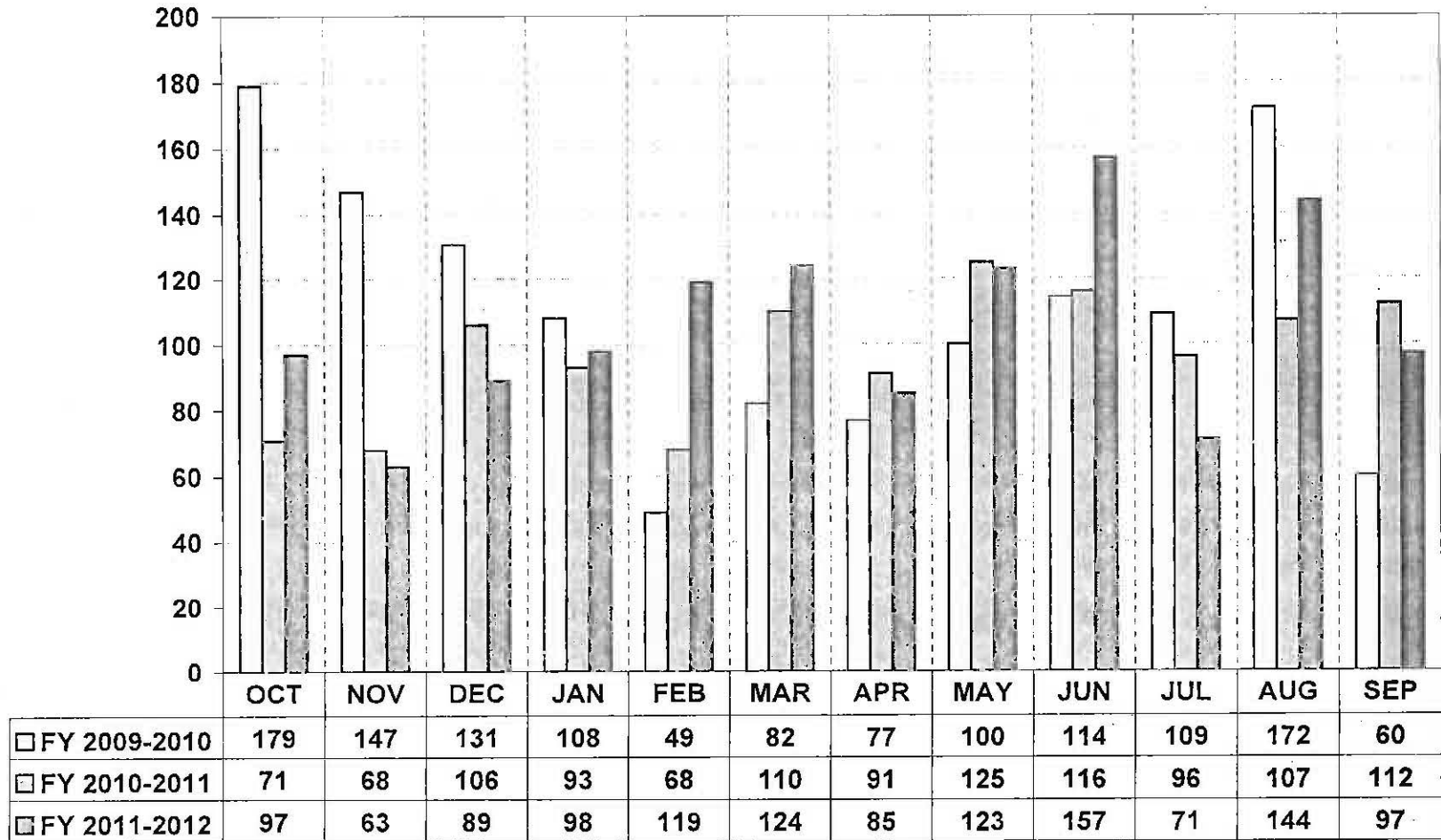




Timothy P. Ryan
Director



Miami-Dade Corrections and Rehabilitation Department DEPARTMENT-WIDE INMATE GRIEVANCES YEARLY COMPARISON

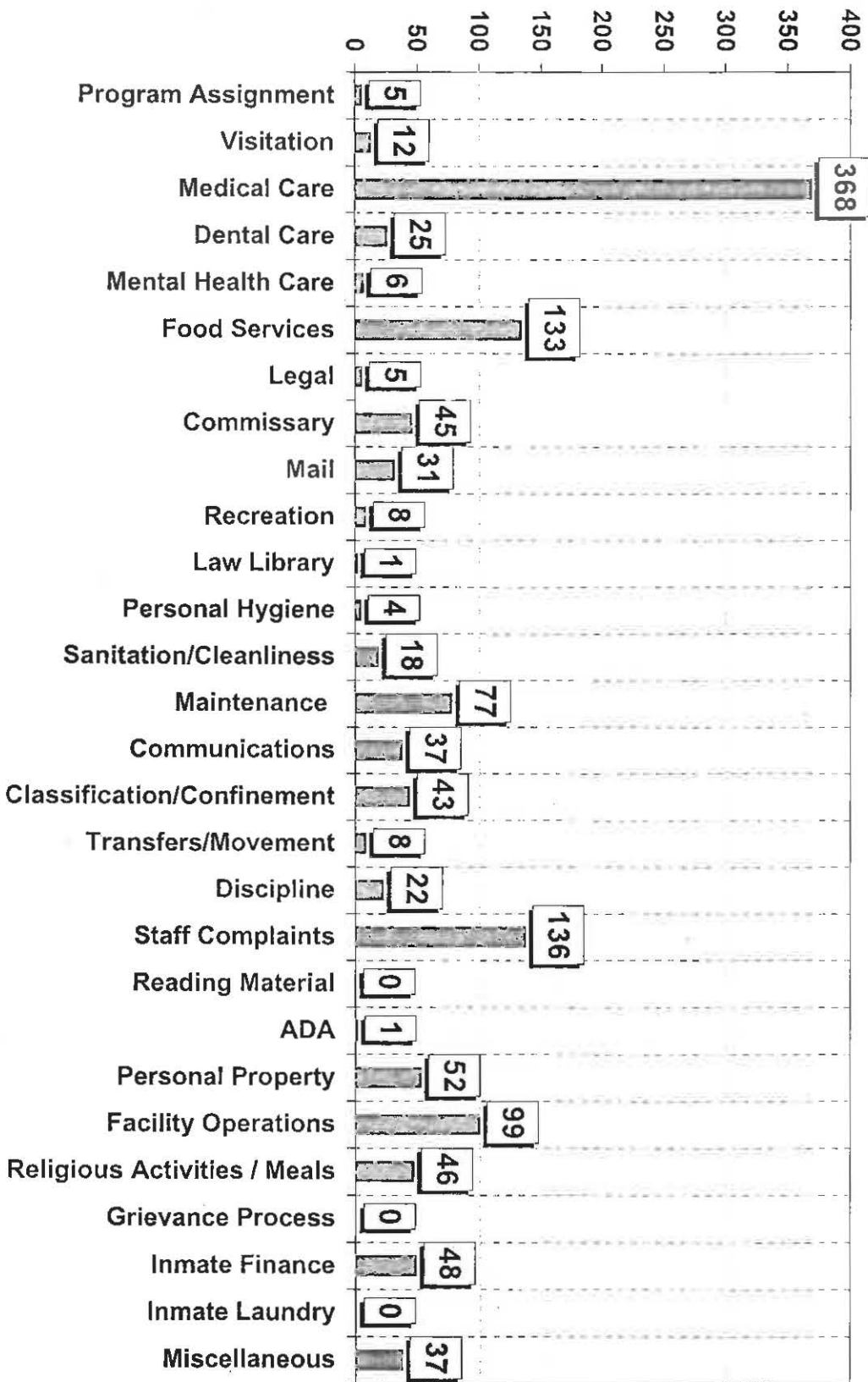




Miami-Dade Corrections and Rehabilitation Department DEPARTMENT-WIDE



INMATE GRIEVANCE BY TYPE FY 2011-2012 Q1-Q4

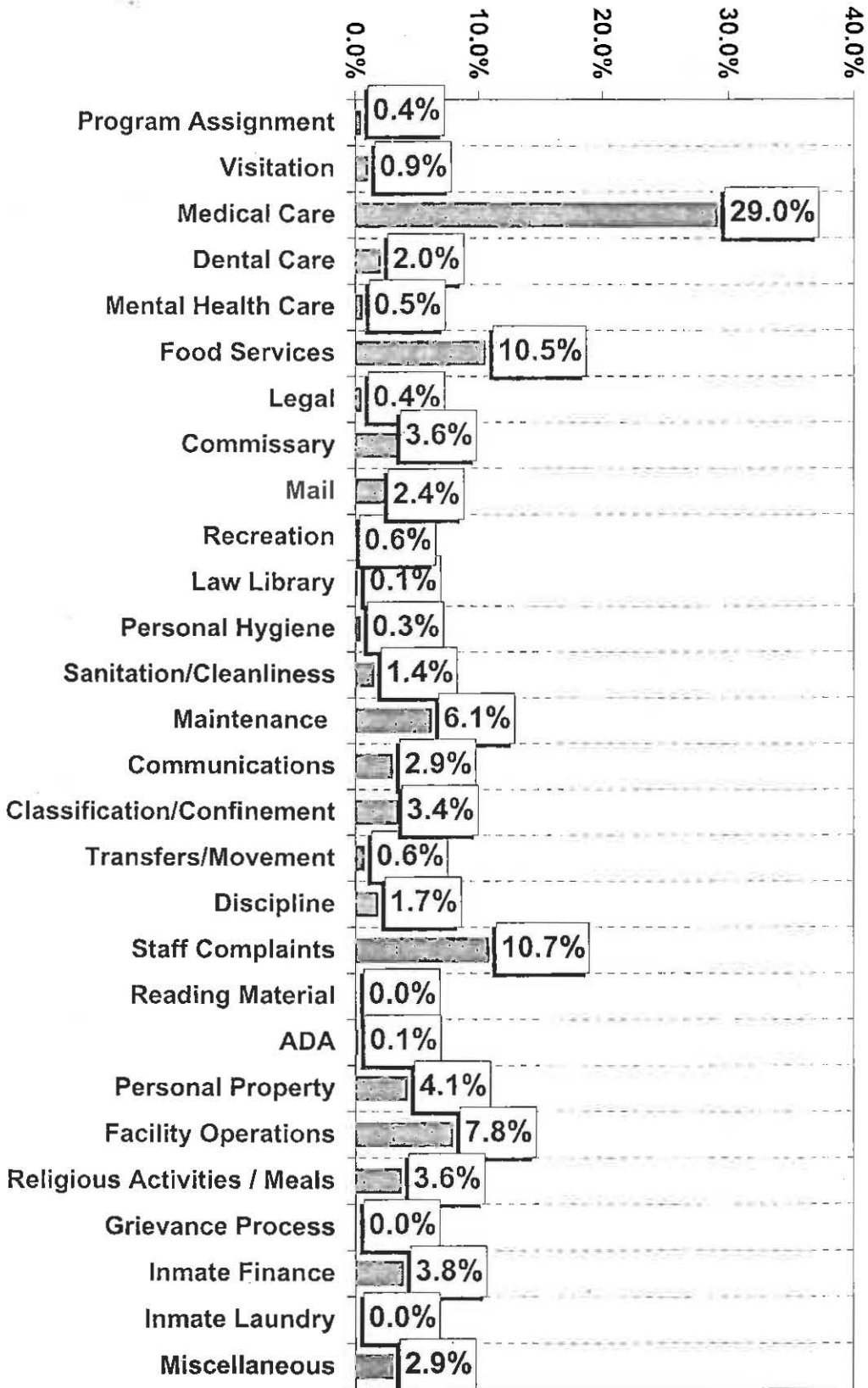




Miami-Dade
Corrections and Rehabilitation Department
DEPARTMENT-WIDE



PERCENTAGE OF INMATE GRIEVANCES BY TYPE
FY 2011-2012 Q1-Q4



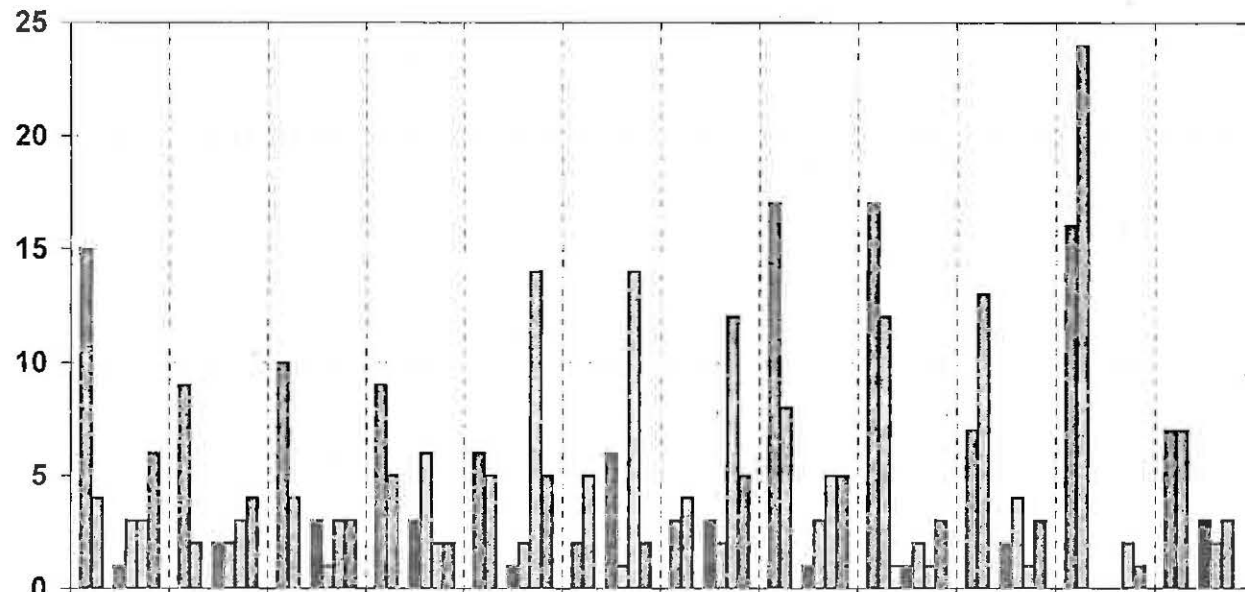


Timothy F. Ryan
Sheriff

Miami-Dade Corrections and Rehabilitation Department



MEDICAL CARE SUB-CATEGORIES INMATE GRIEVANCES FY 2011-2012 Q1-Q4



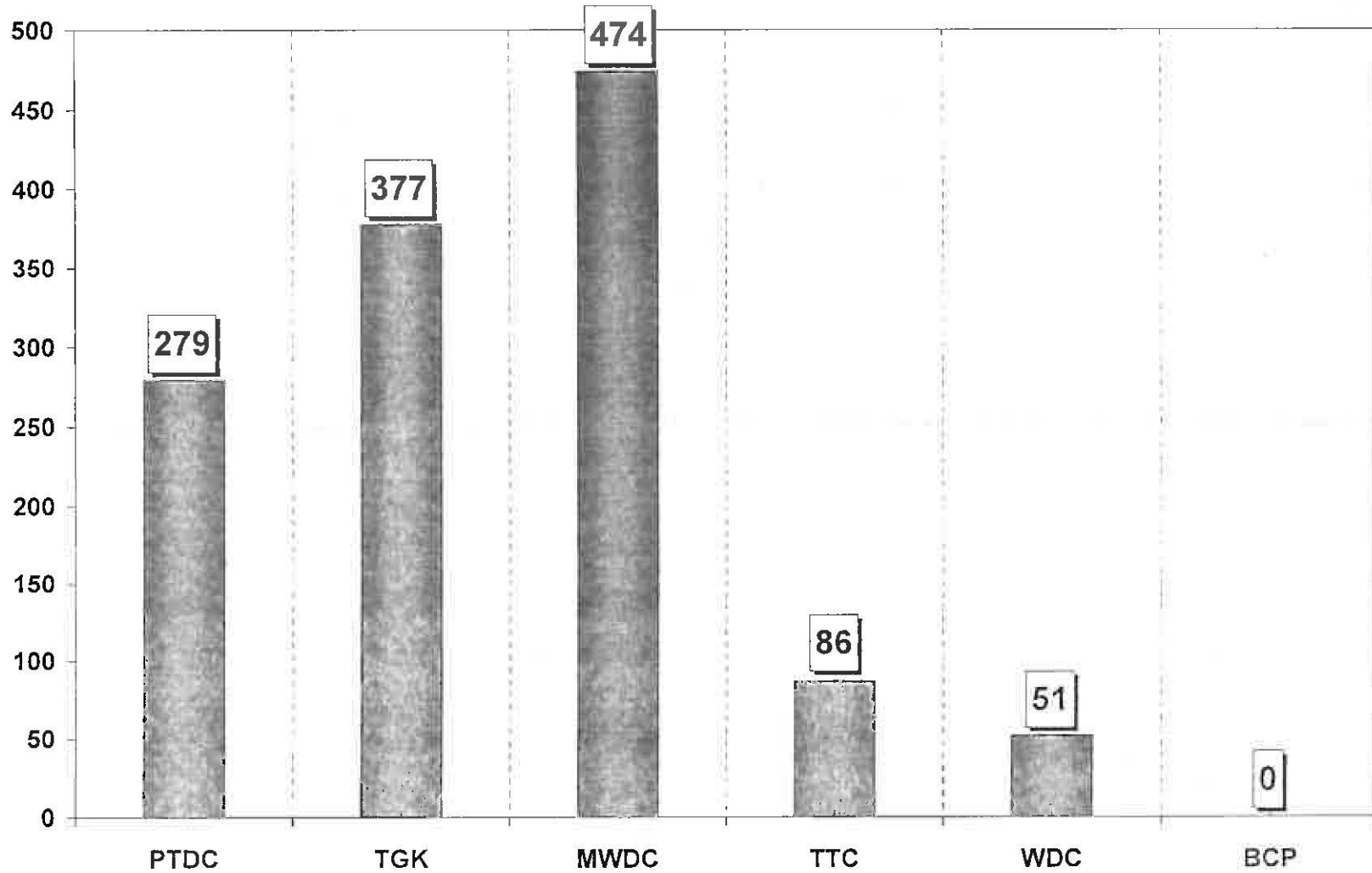
	OCT	NOV	DEC	JAN	FEB	MAR	APR	MAY	JUN	JUL	AUG	SEP
■ Medication	15	9	10	9	6	2	3	17	17	7	16	7
□ Sick Call	4	2	4	5	5	5	4	8	12	13	24	7
□ Chest Pains	0	0	0	0	0	0	0	0	1	0	0	0
■ Medical Diet	1	2	3	3	1	6	3	1	1	2	0	3
□ Complaints Against Medical Staff	3	2	1	6	2	1	2	3	2	4	0	2
□ Medical Illness	3	3	3	2	14	14	12	5	1	1	2	3
■ Medical Other	6	4	3	2	5	2	5	5	3	3	1	0



Miami-Dade Corrections and Rehabilitation Department



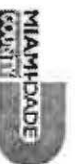
INMATE GRIEVANCES PER FACILITY FY 2011-2012 Q1-Q4



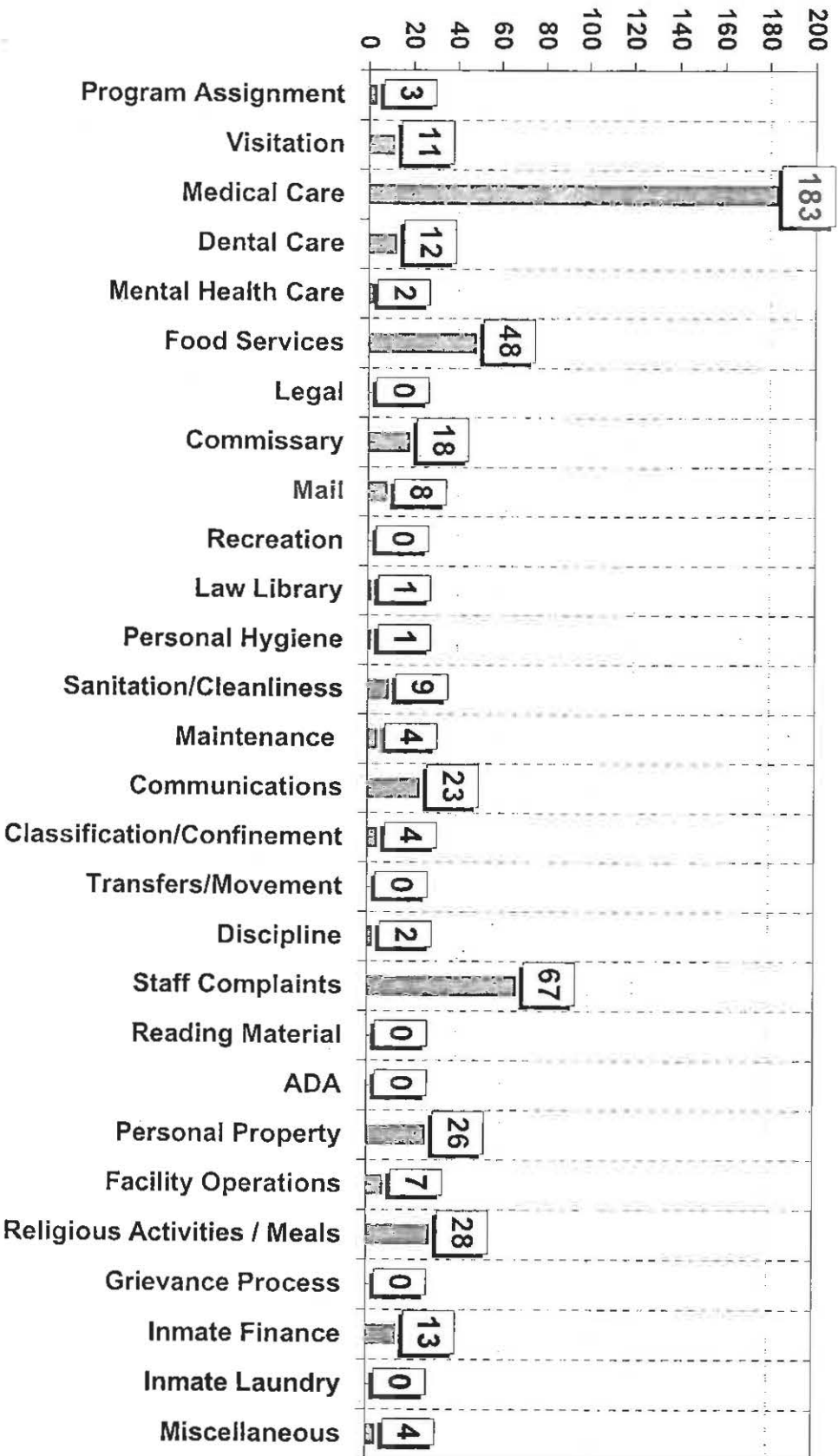


Timothy J. Ryan
Governor

Miami-Dade Corrections and Rehabilitation Department METRO WEST DETENTION CENTER



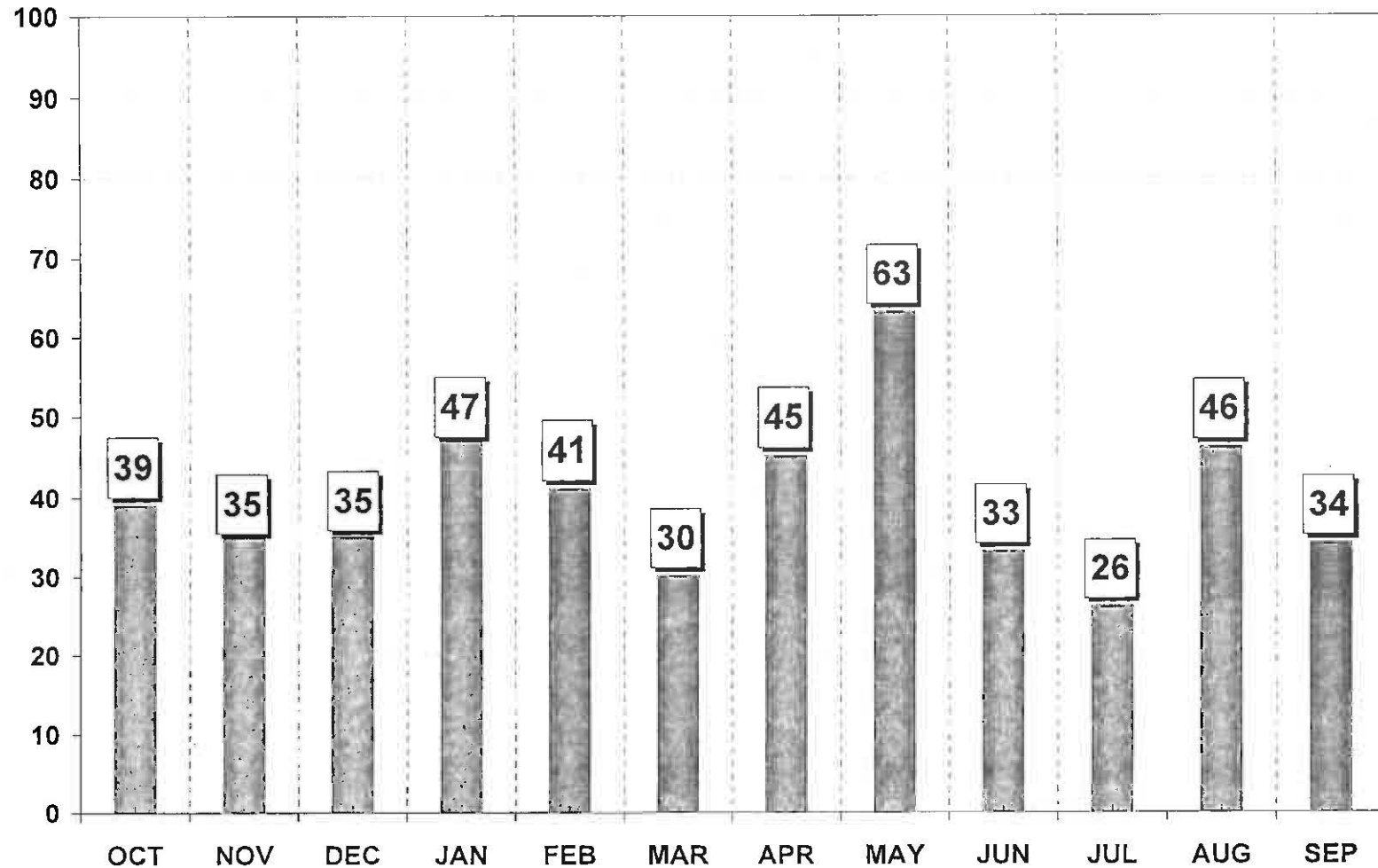
INMATE GRIEVANCES FY 2011-2012 Q1-Q4





Miami-Dade Corrections and Rehabilitation Department METRO WEST DETENTION CENTER

INMATE GRIEVANCES FY 2011-2012 Q1-Q4

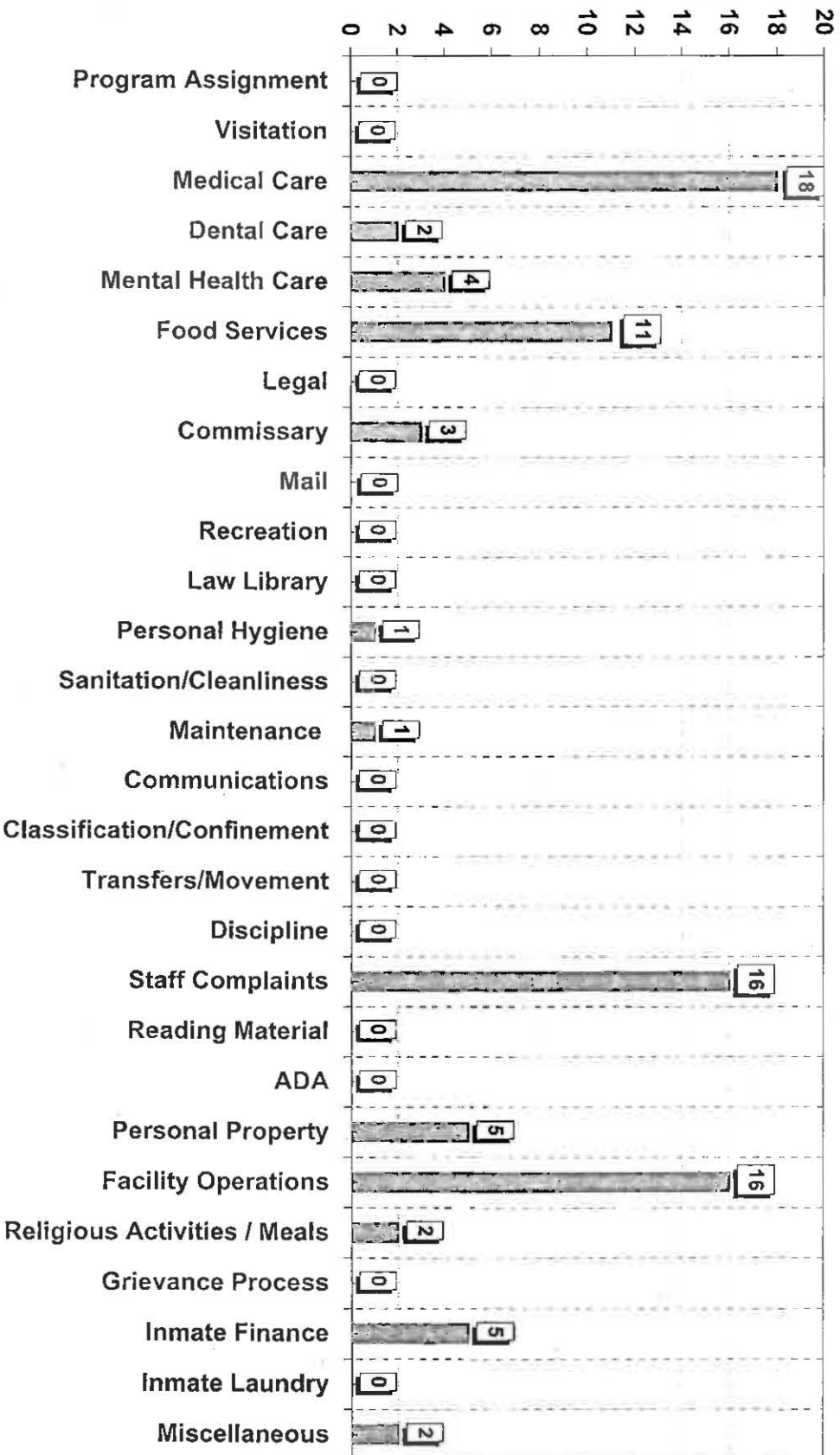




Miami-Dade Corrections and Rehabilitation Department TRAINING AND TREATMENT CENTER



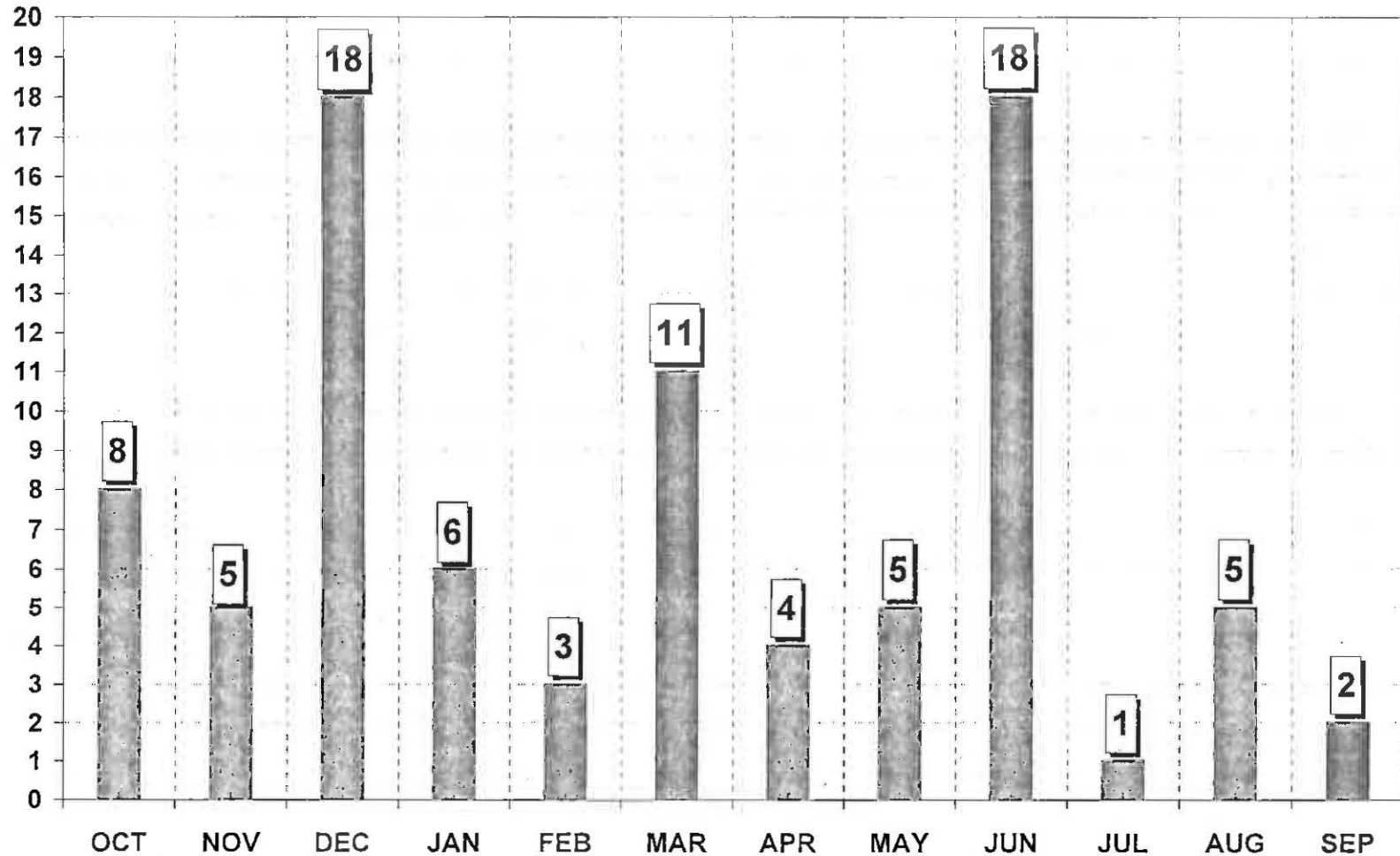
INMATE GRIEVANCES FY 2011-2012 Q1-Q4





Miami-Dade Corrections and Rehabilitation Department TRAINING AND TREATMENT CENTER

INMATE GRIEVANCES FY 2011-2012 Q1-Q4

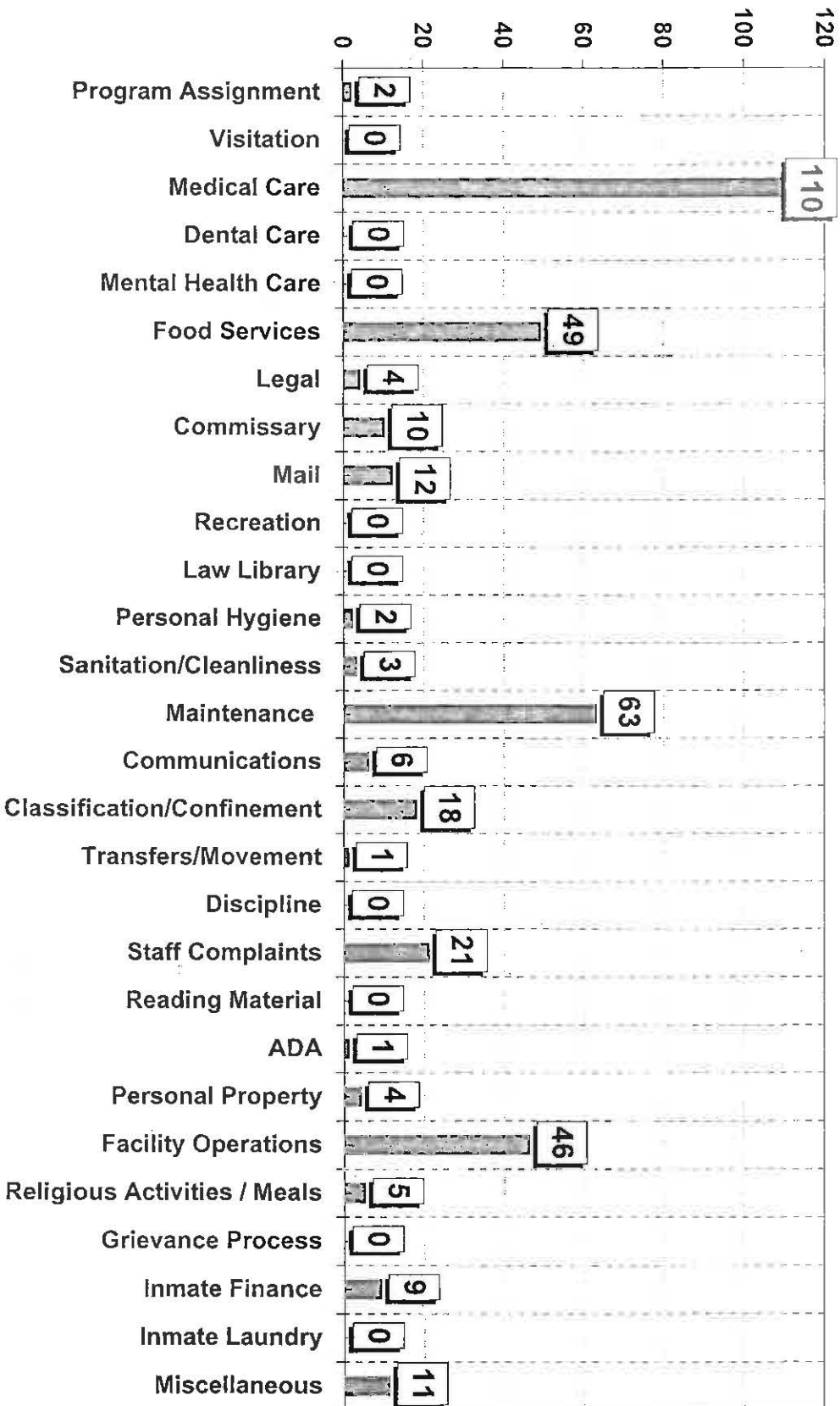




Miami-Dade
Corrections and Rehabilitation Department
TURNER GUILFORD KNIGHT CORRECTIONAL CENTER



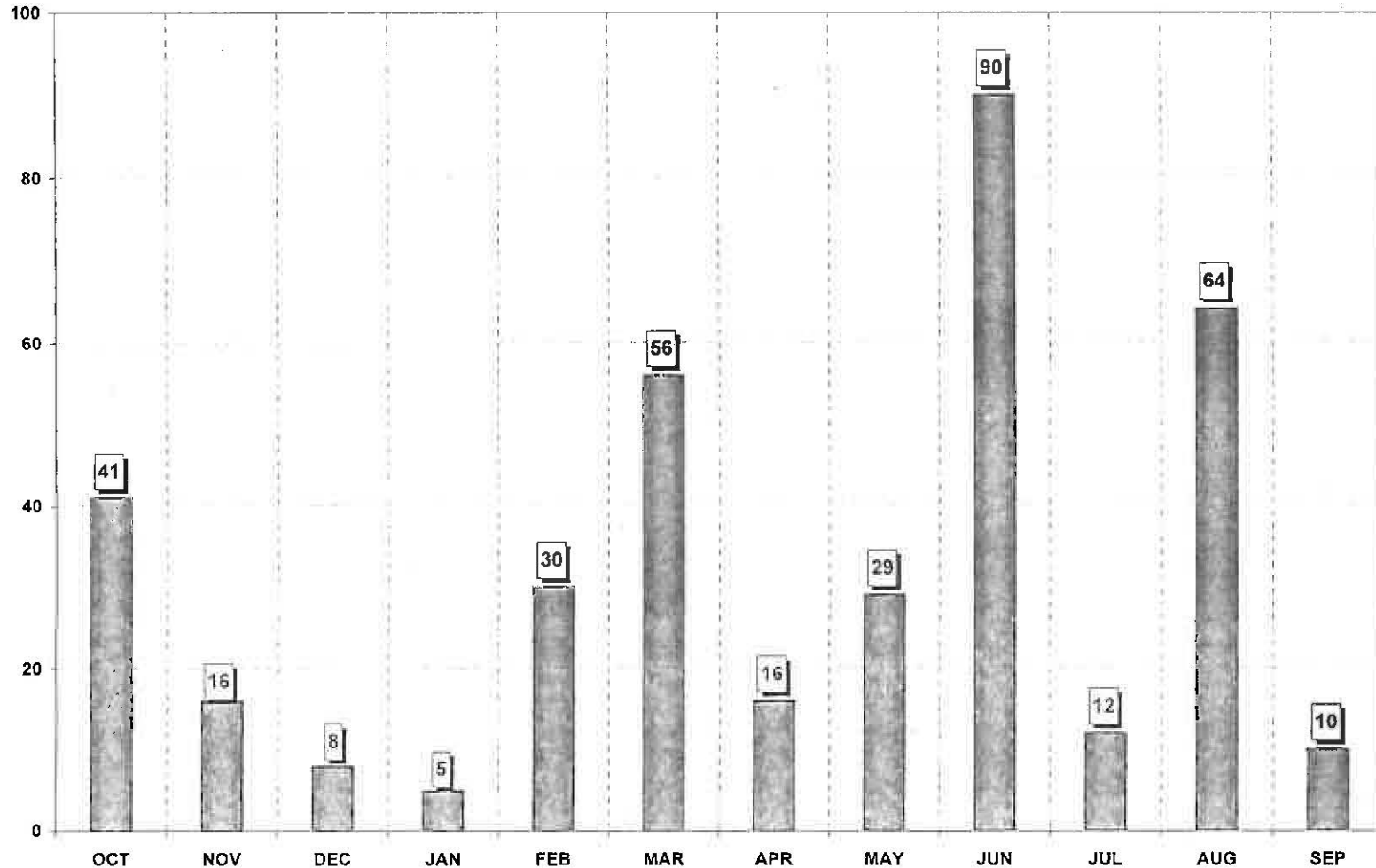
INMATE GRIEVANCES
FY 2011-2012 Q1-Q4





Miami-Dade Corrections and Rehabilitation Department TURNER GUILFORD KNIGHT CORRECTIONAL CENTER

INMATE GRIEVANCES FY 2011-2012 Q1-Q4

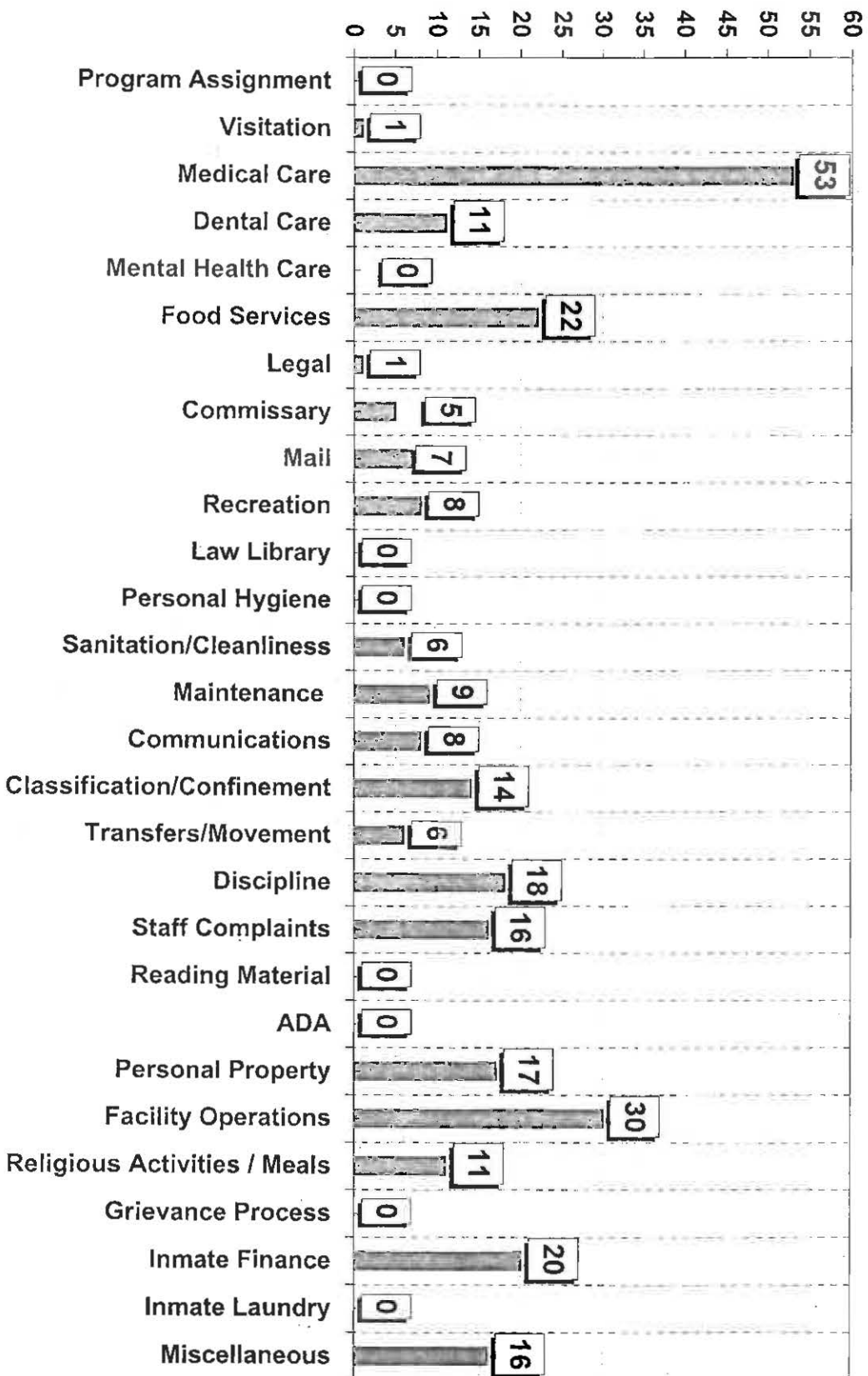




Miami-Dade Corrections and Rehabilitation Department PRE-TRIAL DETENTION CENTER



INMATE GRIEVANCES FY 2011-2012 Q1-Q4



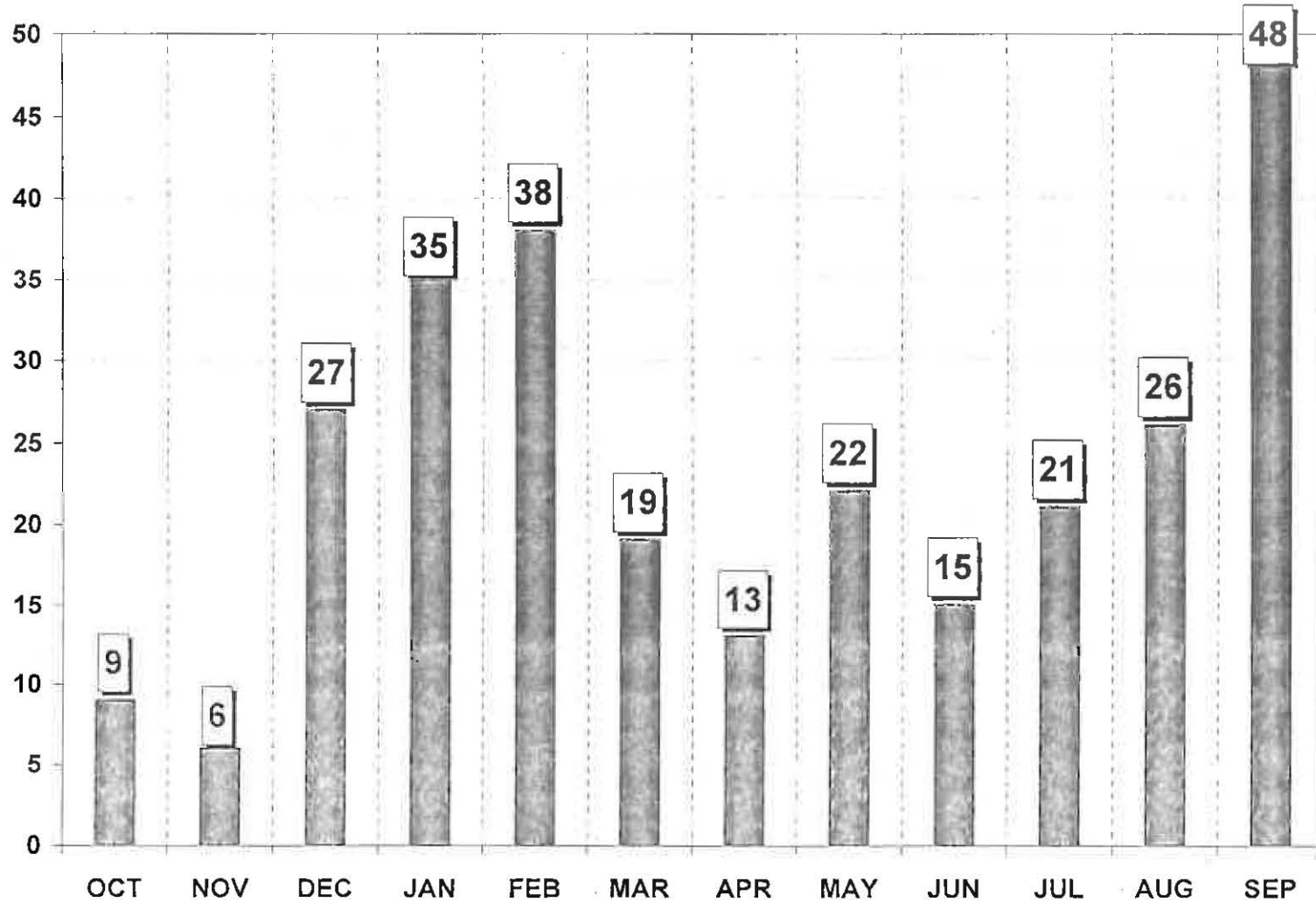


Timothy P. Ryan
Director



Miami-Dade Corrections and Rehabilitation Department PRE-TRIAL DETENTION CENTER

INMATE GRIEVANCES FY 2011-2012 Q1-Q4

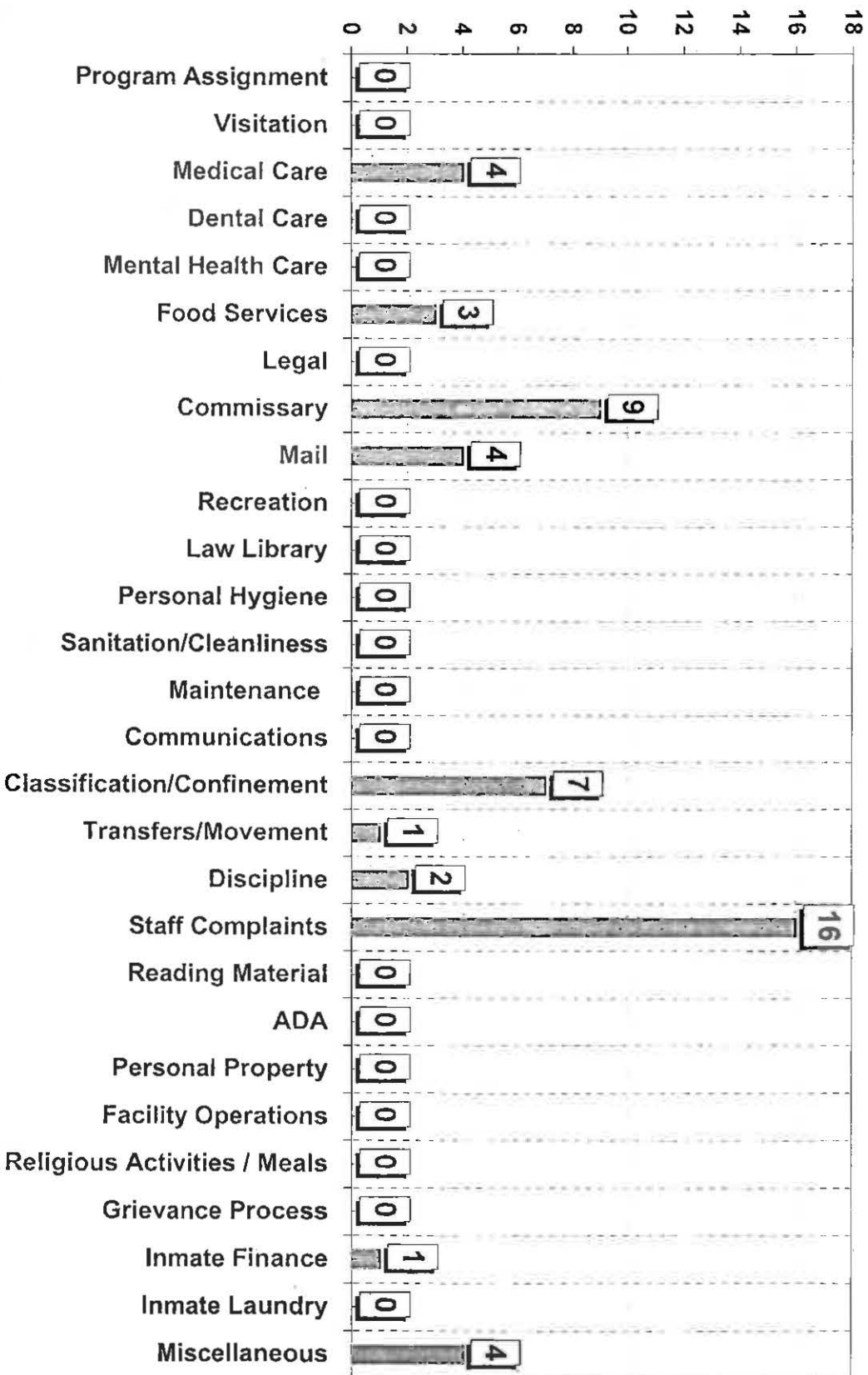




Miami-Dade Corrections and Rehabilitation Department WOMEN'S DETENTION CENTER



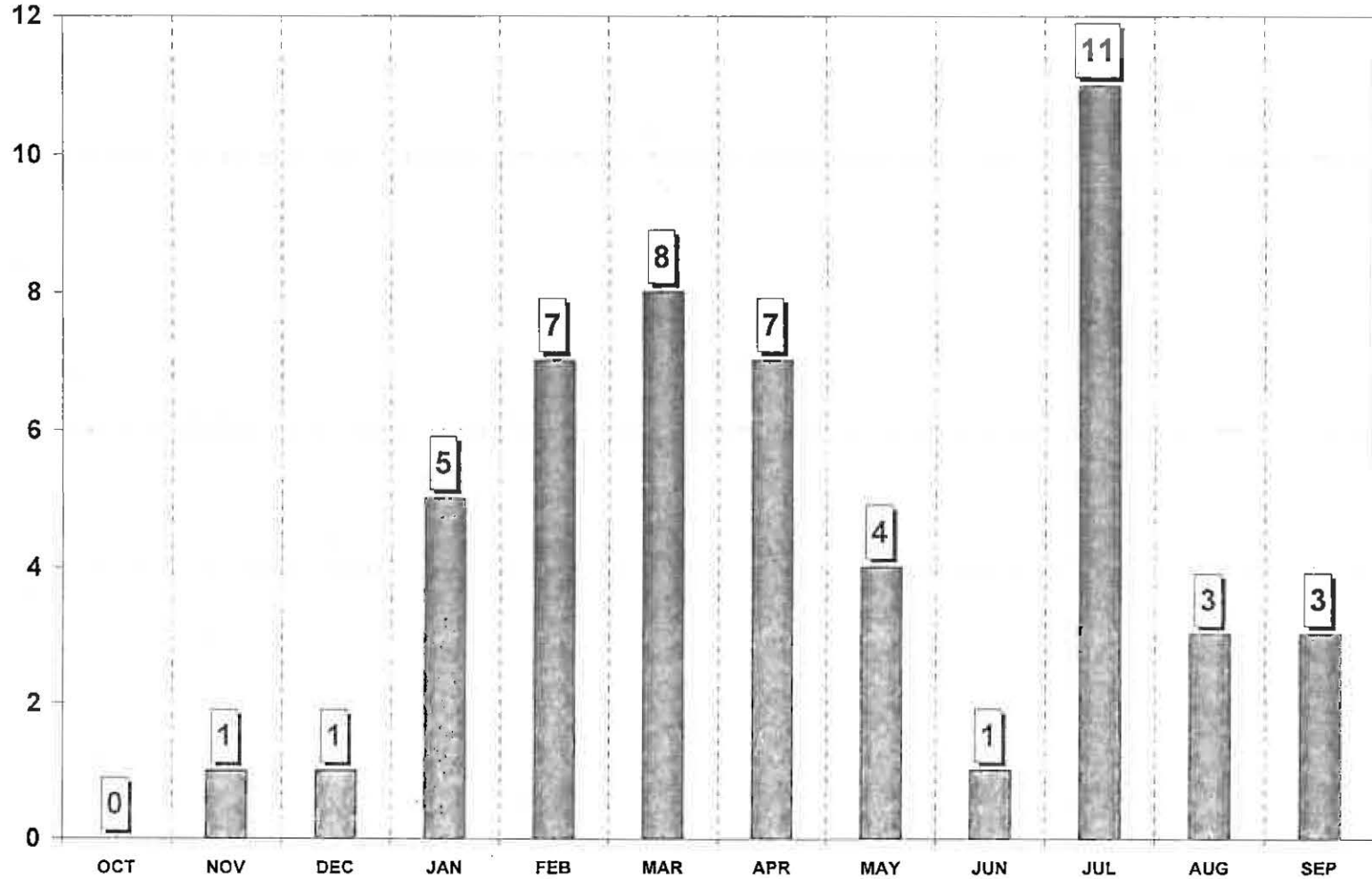
INMATE GRIEVANCES FY 2011-2012 Q1-Q4





Miami-Dade Corrections and Rehabilitation Department WOMEN'S DETENTION CENTER

*INMATE GRIEVANCES
FY 2011-2012 Q1-Q4*

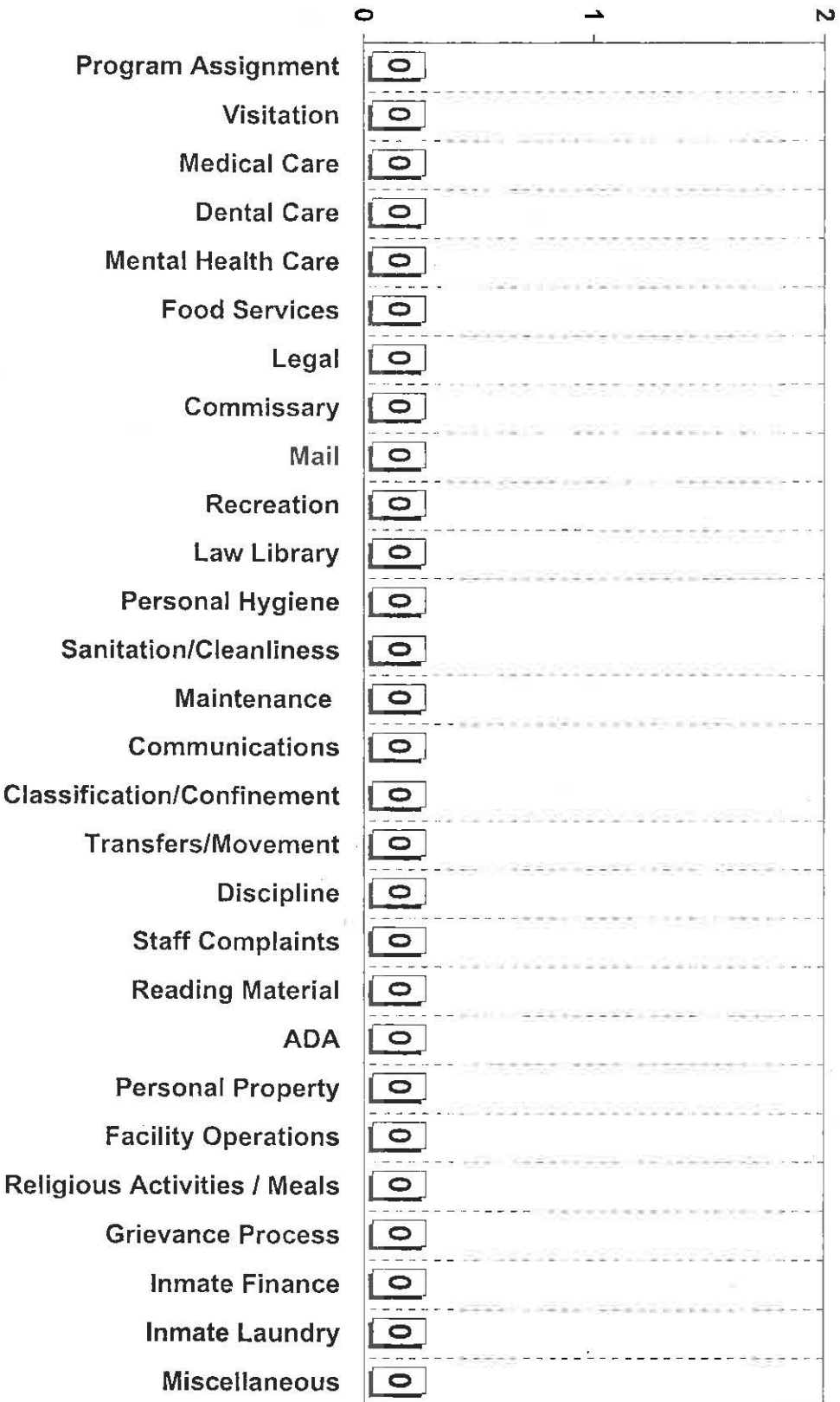


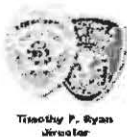


Miami-Dade Corrections and Rehabilitation Department BOOT CAMP PROGRAM



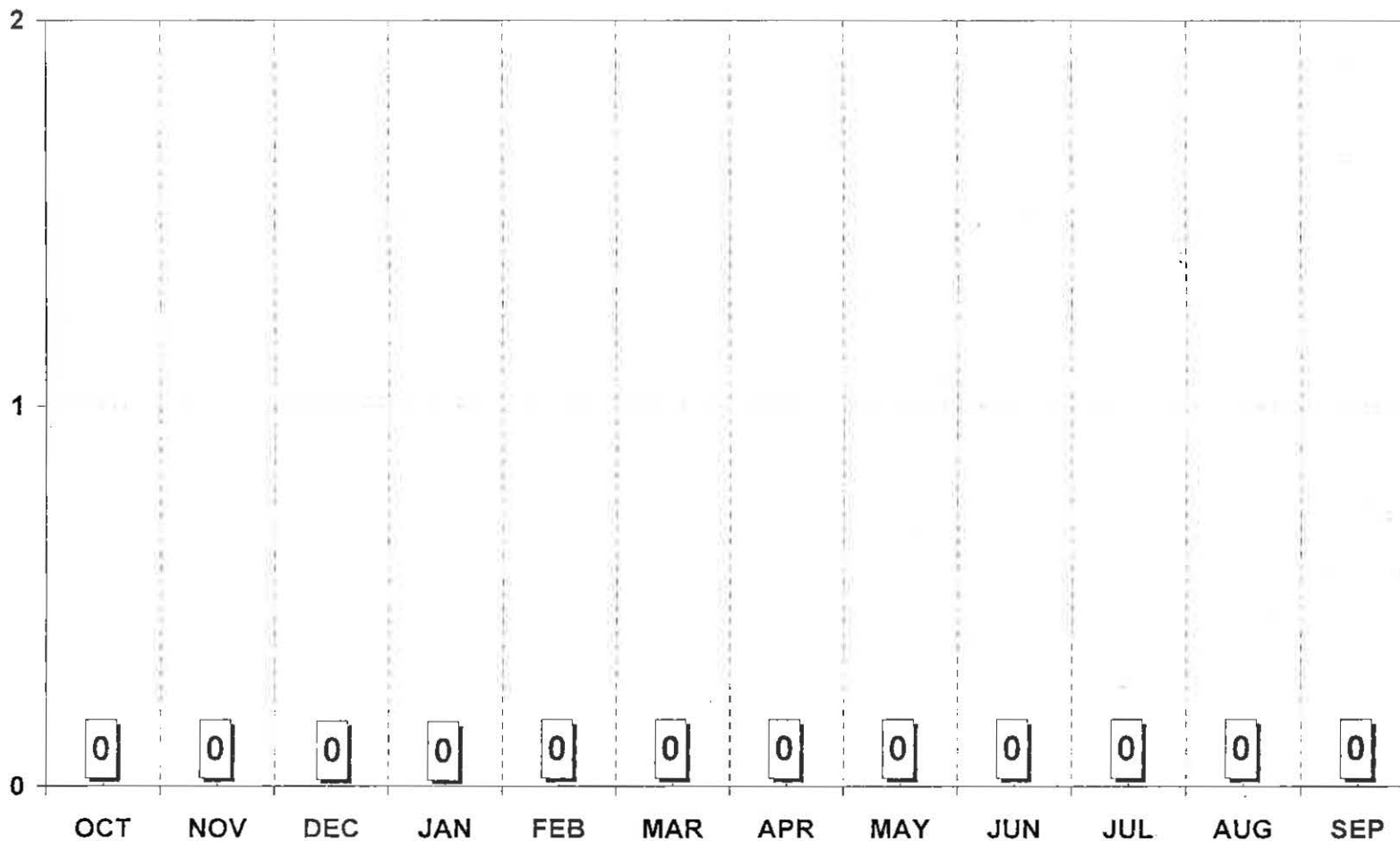
**INMATE GRIEVANCES
FY 2011-2012 Q1-Q4**





Miami-Dade Corrections and Rehabilitation Department BOOT CAMP PROGRAM

*INMATE GRIEVANCES
FY 2011-2012 Q1-Q4*





Miami-Dade Corrections and Rehabilitation Department DEPARTMENT-WIDE

*INMATE GRIEVANCES PER 100 INMATES
FY 2011-2012 Q1-Q4*

